

BLIND RIVET NUTS

Designation: **BLIND RIVET NUTS**

Codes: TRCA, TRCR Y TRAV

Reference: **FT TR-en**

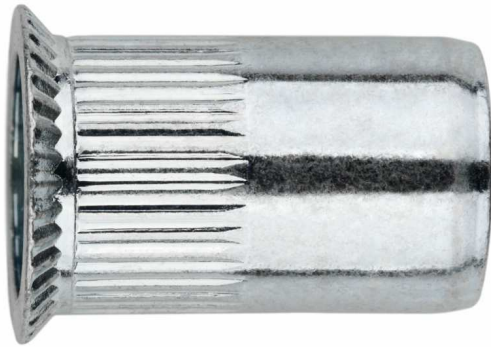
Date: **22/09/15**

Revision: 3

Page: **6 out of 6**

3. TRAV

RIVET NUT COUNTERSUNK HEAD



Properties



Steel



Covering zinc plated $\geq 5 \mu\text{m}$

Main applications



Carpintería aluminio

Aluminium
woodwork

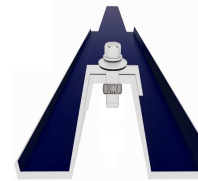


Plate assembly



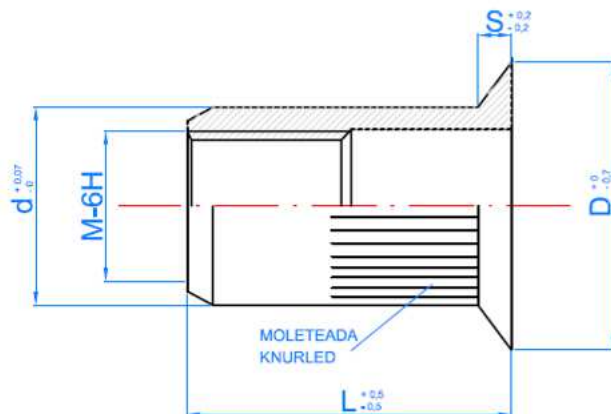
Profile plate metal

3.1. Characteristics and advantages

- To be used when a flat surface is needed.
- For bigger fixing thickness.
- Flat finished without protrusions on thin sheets with low loads (for example: appliances or bodyworks).

3.2. Information

CODE	Metric	L Length [mm]	D ϕ head [mm]	d ϕ body [mm]	S Countersinking thickness [mm]	Fixing thickness [mm]	ϕ Pilot hole [mm]
TRAV0411	M4	11.5	9	5.9	1.8	1.5 ÷ 3.5	6
TRAV0513	M5	13.5	10	6.9	1.8	1.5 ÷ 4.0	7
TRAV0616	M6	16	12	8.9	1.8	1.5 ÷ 4.5	9
TRAV0819	M8	19	14	10.9	1.8	1.5 ÷ 4.0	11
TRAV1021	M10	21	16	12.9	1.8	1.5 ÷ 4.0	13



MECHANICAL PROPERTIES RECOMMENDED LOAD

Metric [-]	Tensile [KN]	Shear [KN]	Torque [Nm]
M4	7.84	2.15	4
M5	10.78	2.25	5
M6	16.67	3.62	10
M8	30.79	4.7	18
M10	34.32	5.19	28