

2. INSTALLATION DATA

2.1. RE-NO

Standard Rivet



Properties



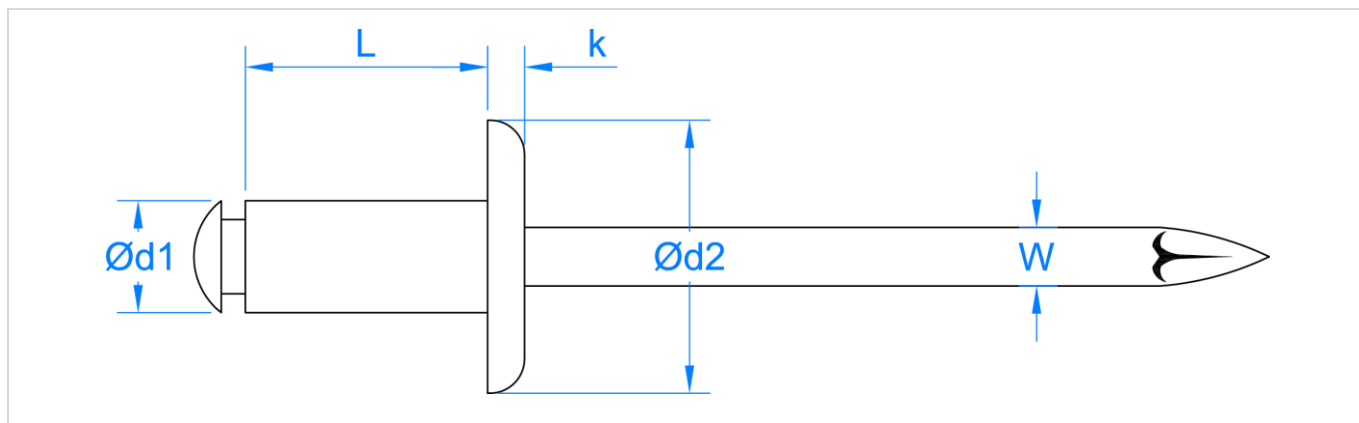
Aluminum body



Zinc plated steel shaft

Sizes

CODE	Ø Drill [mm]	Fixture thickness [mm]	Ø d1 [mm]	L [mm]	Ø d2 [mm]	K [mm]	W [mm]
RENO3206	3,3	1,0 – 3,0	3,2	06	6,2	1,2	1,8
RENO3208		3,0 – 5,0		08			
RENO3210		5,0 – 7,0		10			
RENO3212		7,0 – 9,0		12			
RENO3214		9,0 – 11,0		14			
RENO3216		11,0 – 13,0		16			
RENO3218		13,0 – 15,0		18			
RENO4006		4,1		0,5 – 2,0			
RENO4008	2,0 – 4,0		08				
RENO4010	4,0 – 6,0		10				
RENO4012	6,0 – 8,0		12				
RENO4014	8,0 – 10,0		14				
RENO4016	10,0 – 12,0		16				
RENO4018	12,0 – 14,0		18				
RENO4020	14,0 – 16,0		20				
RENO4025	16,0 – 18,0		25				
RENO4030	23,0 – 16,0		30				
RENO4035	26,0 – 30,0	35					
RENO4806	5,0	0,5 – 1,5	4,8	06	9,0	1,6	2,7
RENO4808		1,5 – 3,5		08			
RENO4810		3,5 – 5,5		10			
RENO4812		5,5 – 7,5		12			
RENO4814		7,5 – 9,5		14			
RENO4816		9,5 – 11,5		16			
RENO4818		11,5 – 13,5		18			
RENO4820		13,5 – 15,0		20			
RENO4822		15,0 – 17,0		22			
RENO4824		17,0 – 19,0		24			
RENO4826		19,0 – 21,0		26			
RENO4828		21,0 – 23,0		28			
RENO4830		23,0 – 25,0		30			
RENO4835		25,0 – 30,0		35			
RENO6008	6,1	1,0 – 2,0	6,0	08	11,3	1,9	3,2
RENO6010		2,0 – 4,0		10			
RENO6012		3,0 – 6,0		12			
RENO6016		6,0 – 10,0		16			
RENO6018		10,0 – 12,0		18			
RENO6025		15,0 – 19,0		25			



2.2. RE-BL/RE-NE White rivet / Black rivet



Properties



Aluminum body



Zinc plated steel shaft

Size

CODE	Ø Drill [mm]	Fixture thickness [mm]	Ø d1 [mm]	L [mm]	Ø d2 [mm]	K [mm]	W [mm]
RENO3208BL / NE	3,3	3,5 – 5,0	3,2	08	6,3	1,0	1,8
RENO3210BL / NE		5,0 – 7,0		10			
RENO3212BL / NE		7,0 – 9,0		12			
RENO4008BL / NE	4,1	3,0 – 5,0	4,0	08	8,0	1,3	2,2
RENO4010BL / NE		5,0 – 6,5		10			
RENO4012BL / NE		6,5 – 8,5		12			
RENO4014BL / NE		8,5 – 10,5		14			
RENO4810BL / NE	5,0	4,0 – 6,0	4,8	10	9,5	1,4	2,6
RENO4812BL / NE		6,0 – 8,0		12			
RENO4814BL / NE		8,0 – 10,0		14			
RENO4816BL / NE		10,0 – 12,0		16			

