

**2.4 AUTO**

**Self-drilling screw for girders - screw point no.5  
- hexagonal head**



**Properties**



Steel

Zinc-plated coating

Available in different colours

**Base material**

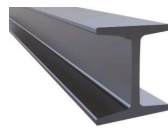


Plate assembly

Plate profile

IPN

**Properties**



Hexagonal with embossed washer

Hexagonal with embossed washer

Girder screw point

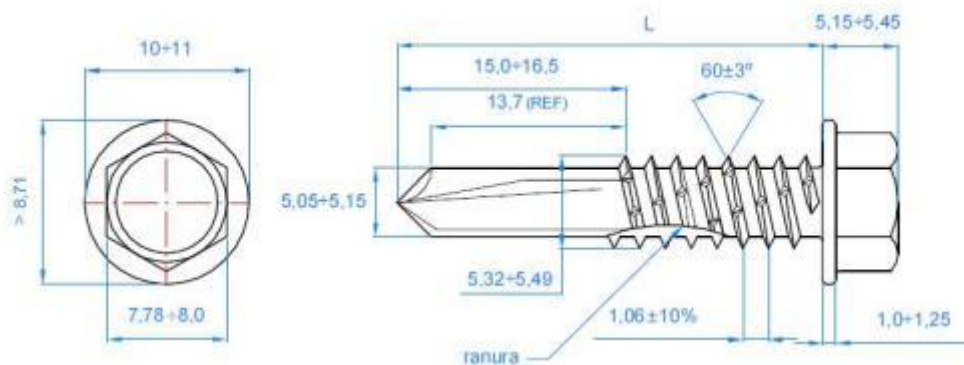
**Installation data**

**CODE**

**M 5.5**

$d_k$ : washer head diameter	[mm]	11
k: head thickness	[mm]	5.3
c: washer thickness	[mm]	1.15
s: spanner	[mm]	8
Point		#5
D: exterior thread diameter	[mm]	5.5
d: interior thread diameter	[mm]	4.6
p: thread	[mm]	1.06
l: lengths	[mm]	32 - 38
Installation bit code (hexagonal magnetic bit)		BOCA008
Drill capacity	[mm]	4.0 - 12.0

**DRAWING**



- Zinc-plated finish.
- For general plate-plate joints for thicknesses up to 12 mm.
- Versions with assembled EPDM washer for sealed joints in façades and roofing (consult ARVUL Technical Data Sheet).

